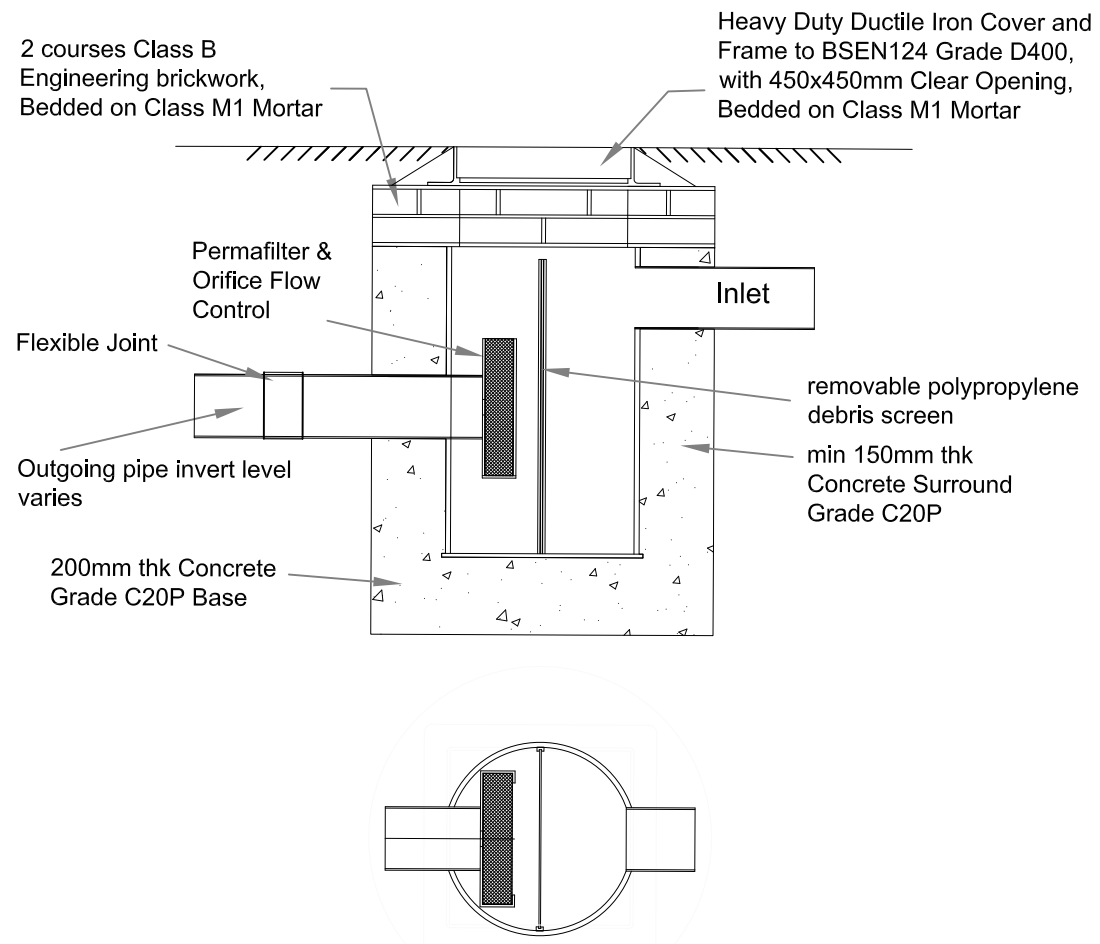


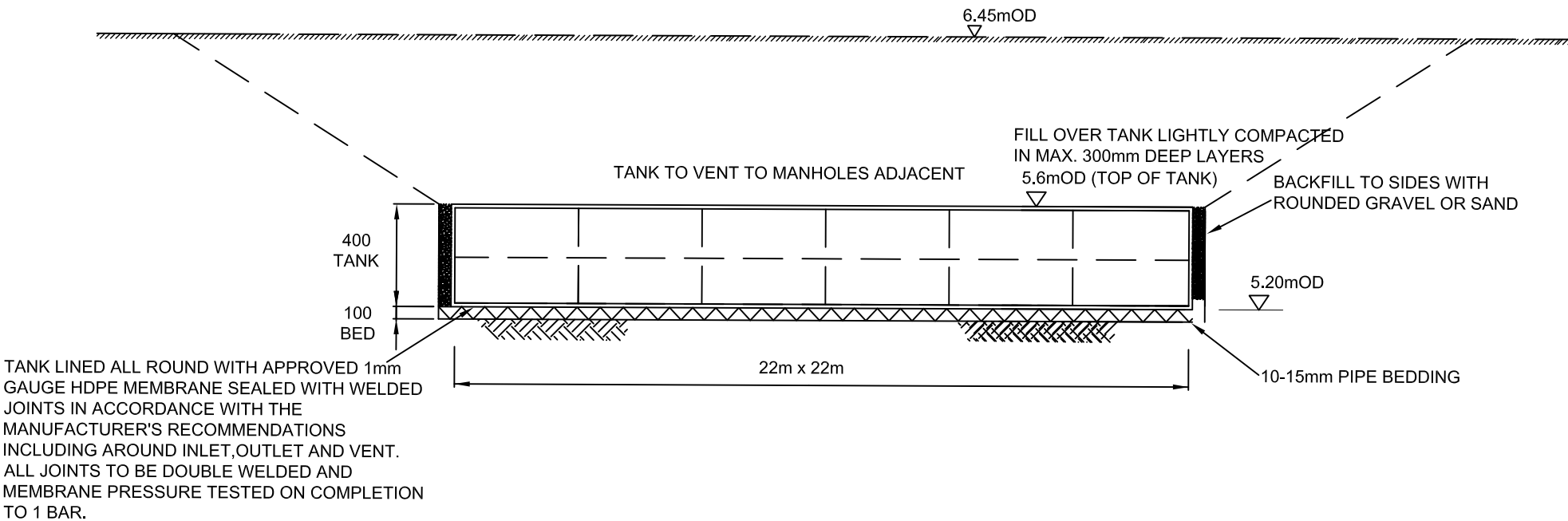
TYPICAL 750mmØ CATCHPIT INSPECTION CHAMER (MAXIMUM DEPTH 1200MM) SCALE 1:20



TYPICAL 750mmØ CATCHPIT INSPECTION CHAMER INCORPORATING FLOW CONTROL AND DEBRIS DEVICE SCALE 1:20

FLOW CONTROL SCHEDULE

MH REF.	DISCHARGE LIMIT	ORIFICE DIAMETER
Control MH	5.7l/s	56mm



CRATE TANK - CROSS-SECTION (1:50)

NOTES

1. Driveway and car park surfacing design and construction to Engineer's Specification (by others).
2. All dimensions are in millimetres unless otherwise stated.
3. Pre-cast concrete products shall comply with the relevant provisions of BS 5911 and be 'Kite Marked'.
4. Manhole covers and frames, grids and frames shall comply with the relevant provisions of BS EN 124. D400 class manhole cover to be used within untrafficked areas. A15 class manhole cover to be used in untrafficked areas.
5. Do not scale from this drawing. If in doubt ask.

Proposed Discharge rate of 5.7l/s based on peak flow through existing 100mm diameter pipe.

Occupier should undertake inspection of sump manholes upstream of crate tank and clear when required.

KEY:

- Roofed and Paved Areas draining to crate tank 6151m2
- Roofed areas to sealed downpipes
- SW PPIC Manhole with 300mm deep sump
- SW PPIC Manhole with 300mm deep sump and control of 5.7l/s
- Proposed Crate Tank 715m2 by 0.4m deep with minimum 0.6m cover. 100yr+CC30% volume of 327.5m3.

REV	DESCRIPTION	DATE
0	For Approval	05/07/19

EWE Associates Ltd

EWE Associates Limited
7 Waveney Close
Burton Upon Stather
Scunthorpe
DN15 9DT
Tel: 07875 972270

Email : lea.favill@eweassociates.com

PROJECT
Howarth Timber
Springfield Timber
Chester

CLIENT
Howarth Timber

DRAWING TITLE
SW Drainage Strategy

SCALE
1:500

DATE
05/07/19

DRAWN BY
LJF

CHECKED BY
JF

REVISION
0

DRAWING No
EWE/2418/01